



# CRUISE COMPASS

## Allure of the Seas®

## Civitavecchia (Rome), Italy

Thursday, October 22, 2015

### EXPERIENCE IT. EMBRACE IT. ADORE IT.

The "Eternal City", as its nickname suggests, has infinite possibilities and non-stop excitement. No wonder so many visitors are quick to proclaim their undying love for this Italian beauty. Brace yourself for one of the most passionate love affairs you'll ever have with a city. It's easy to get emotionally attached here, in Rome, you don't just see the sights; you experience them whole-heartedly. Let your imagination run wild as you tour the Pantheon, the Colosseum and the Roman Forum. Find yourself speechless as you marvel at Michelangelo's masterpiece; the ceiling of the Sistine Chapel. Take in the sights, sounds and smells at Campo dei Fiori's morning market. Or just wander through the bustling piazzas, stumbling upon gushing fountains and antique treasures. However you choose to spend your day, be sure to do it with gusto!

### BACK ONBOARD

#### 1. Spa Tours

Visit the Day Spa on Deck 6 between 11:30 am - 4:30 pm for your guided tour of our beautiful facility and check out all the revolutionary treatments and services! Find out how to save money with our triple indulgence spa packages and ask about the best kept secret in the spa - the "Thermal Suite".

#### 2. DreamWorks Character Parade

Join us today for our exciting DreamWorks parade, Move it! Move it! You won't want to miss a single moment of this festive parade as Shrek and his friends steal the scene! 7:45 pm, Royal Promenade, Deck 5.

#### 3. Designer Watch Sale up to 35% off

Save up to 35% off of United States retail prices on our designer watch brands, such as Citizen, Bulova, Michael Kors, Guess, Fossil, Anne Klein and more. All duty-free and price match guaranteed. Prices start from \$50. Sale Starts at 8:15 pm, Royal Promenade, Deck 5.

#### 4. Unlimited Beverage Package

Visit any of our exciting Allure of the Seas bars and ask how you can sign up for an Unlimited Beverage Package. Our packages are by far the best bang for your buck and will most certainly help move your cruise vacation in the right direction.

#### 5. Surf The Net At The Speed Of Vroom!

Surf, stream and share throughout the entire ship with the only high speed internet at sea! Simply connect to 'royal-wifi' on your device, go to any page in your browser and follow the simple steps to log on, it's easy.

#### 6. Ultimate Beverage Package

Enjoy the convenience of our all-inclusive beverage packages to keep you refreshed! Select from four distinct packages ranging from the alcohol-free 'Royal Replenish' package for \$22 (per person, per day) to the 'Ultimate' package, which includes everything in the 'Premium' and 'Royal Replenish' packages combined for just \$67 (per person, per day). Gratuity is included. All Beverage Packages are subject VAT.

### IMPORTANT NOTE FOR SHOWS



Look inside for today's show schedule and find out which shows need reservations. Doors are open for guests with reservations 45 minutes prior to showtimes. We kindly request all guests to be seated 15 minutes prior to showtime as 10 minutes before showtime, any available seats will be released for guests without reservations.

### BOOK AN EXCURSION FOR NAPLES

Sail to the beautiful isle of Capri. Wander the charming seaside villages of the Amalfi Coast. Hike Mount Vesuvius or visit the Ancient Roman Civilization of Pompeii.

For more information, stop by the Shore Excursions Desk, Deck 5.

### DINING THE ALLURE WAY

At Chops Grille, you can indulge in the true steakhouse experience. Serving succulent steaks and seafood with family-style side dishes, Chops Grille is one of our most popular restaurants onboard. And if you're looking to celebrate a special occasion, or try something different, the elegant Giovanni's offers superbly delicious Italian cuisine. Just be sure to reserve your table early since both restaurants tend to book quickly.

### TODAY'S FORECAST

Mostly cloudy

High Temperature: 66°F (19°C)

SUNRISE: 7:35 am

SUNSET: 6:20 pm



## IMPORTANT THINGS TO KNOW TODAY



**SHIP'S ARRIVAL:** 7:00 am

**GANGWAY OPEN:** 7:15 am - Estimated, based on clearance by local authorities

**ALL ABOARD:** 7:30 pm

**GANGWAY:** Please use the gangway star button in the elevator.

**TONIGHT'S DINNER DRESS SUGGESTION** - Casual Attire. Please note that swimsuits, robes, bare feet, tank tops, baseball caps & pool wear are not allowed in the main dining restaurants or specialty restaurants. T-shirts, shorts & flip-flops are acceptable for lunch.

**GUEST ASSEMBLY DRILL** - There will be a mandatory Guest Assembly Drill at 5:00 pm for all guests who joined the ship today.

**SECURITY ADVISORY** - For your safety and comfort ashore, we highly recommend you secure all valuables while enjoying our ports of call. Avoid wearing excessive jewelry or carrying large sums of cash with you.

**GOING ASHORE** - We recommend for our guests going ashore to use the gangway star button in the aft elevators and follow the digital signage. For guests on tours, please consult your tour tickets. For guests not on tours, please note the first hour upon arrival could be the busiest time on the gangway. For a more relaxed departure, it is recommended to depart the ship 1 hour after arrival. For guests disembarking today in Civitavecchia, please refer to the notice in your stateroom regarding your meeting point and time.

Please note that the forward gangway (accessible via the elevators and staircases close to the Amber Theater) has been set to only accommodate our guests disembarking the ship in Civitavecchia. This set of restrictions will be enforced to accommodate the regulations of local authorities and the port terminal limitations. It is possible that in the forward part of the ship, you might see elevators on priority mode and staircases closed and only accessible for our guests disembarking. All guests remaining onboard or going out for the day only, are kindly invited to use aft part of the ship and the aft gangway (accessible via the elevators and staircase close to the dining rooms) or they might experience delays.

**TAKE A SHUTTLE TO CIVITAVECCHIA** - The port offers complimentary shuttle service throughout the day today from the cruise pier to Largo della Pace, about a 10-minute drive. This drop off point is located just outside the port area. From there it is a 15 minute walk into town or a 30 minute walk to the train station. Please note that shuttle buses are not wheelchair-accessible. Taxis are extremely limited in Civitavecchia and can not be reserved in advance, so we encourage guests to plan accordingly.

**SHORE VISITS BY MINORS** - Parents or guardians must not permit any guest in their care under the age of 18 to leave the ship in any port without responsible adult supervision.

**BARCELONA TRANSFERS** - Avoid the long taxi lines and enjoy the convenience of purchasing your airport transfer to Barcelona El Prat Airport for \$31.50 per person. Please see Guest Services no later than midnight today (Civitavecchia) with your flight details. (Transfers are available for guests with flights after 10:30 am.) Please remember to keep the transfer receipt for your onboard purchase or the transfer voucher received prior to the cruise and present to Royal Caribbean International terminal representative in Barcelona. Transfers are also available to Barcelona city center (drop off at Plaza Catalunya) for \$15 per person, or to Sants Estacio train station for \$24.50 per person.

**SEAPASS® CASH ACCOUNT LIMITS** - Please be aware that the credit limit is \$500 for guests with cash SeaPass® accounts. Once this limit is reached, the account will be deactivated. To reactivate the account, a cash deposit must be made on the account, or a credit card must be linked to the account. Stop by Guest Services to learn more.

Tomorrow we will be in **Naples, Italy.**







## OFFERS OF THE DAY

### YOU'VE GOT MAIL!

With so much to see and do onboard, make sure you don't miss out on the exclusive offers and limited time specials that are available each day. How? Simply turn on your stateroom television and select the message icon, it's quick, it's easy, and it's the gateway to some great deals!

### TRANSFORM YOUR SKIN WITH THERMAGE

Thermage is the latest non-invasive skin tightening therapy that uses radio frequency to improve the appearance of sagging or loose skin on the face and tummy. Tighten and contour in just one treatment! Find out more from our Medi-Spa Physician. Dial the Day Spa on 4600 today.

### HAVE YOU PLAYED OUR LUCKY SLOTS?

Play on one of our many lucky slot machines and insert your SeaPass card as you play to collect reward points - you stand a chance of winning fantastic prizes!

9:00 pm - 11:00 pm, Casino Royale, Deck 4.

### LOSE INCHES WITH AN IONITHERMIE TREATMENT

This slimming and detoxification treatment reduces the appearance of cellulite, water retention, helps treat bloating and increases energy levels. Lose 3-8 inches in just one session. Book today and receive a complimentary arm treatment, call 4600 for your free consultation.

\*18% service charge will be applied for all services.

### BREITLING & OMEGA SWISS WATCH EXTRAVAGANZA

Join us for the deal of the Day inside Regalia Fine Watch Boutique. High end Swiss Watch extravaganza sale starts at 9:00 pm. Breitling and Omega watches have been a pinnacle of the fine watch industry. Come join our fine watch ambassador to get the best savings you could possibly get on these fine timepieces. Regalia, Deck 5, Royal Promenade.

### TODAY'S PHOTO SPECIAL

Pre-order your "GET THE PICTURE!" digital photo USB by today and you can take home all of your printed photos too for just \$100 extra! Don't spend the last day of your cruise vacation waiting in line, take advantage of this special and avoid the crowds. Focus Photo Gallery, Deck 6.

### ACUPUNCTURE

A Vitality Spa favorite, Acupuncture encompasses every aspect of health and wellness, from de-stressing all the way to eliminating pain associated with Sciatica and Arthritis. Acupuncture is also excellent if you want to quit smoking, loose weight, have anxiety, digestive issues and much more. We invite you to bring us your concerns and we will help to find you the solution. Its time to feel amazing. Contact the Vitality spa for a free consultation, call 4600 or visit us on Deck 6.

### COLLECT YOUR COMPLIMENTARY ART PACK TONIGHT ONLY

Visit the Art Gallery onboard and collect your free gift! View our amazing collection and get a free work of art, \$100 Bid Credit, raffle tickets and more. Tonight only, so don't miss out!

8:00 pm - 10:00 pm, Art Gallery, Deck 4.

### HAVE YOU MET MR. GOLD?

He's hosting a Prohibition era speakeasy cocktail party on Day 6 evening. It's not easy to get an invite to one of his exclusive High Spirits parties, so dial 21136/58212 to try your luck.

10:30 pm - 12:30 am. (\$35 - all inclusive drinks)

### CRUISE DIRECTOR'S PICK OF THE DAY

### FREE HAIR SHOW 'THE ULTIMATE CUT'

Free Hair Show 'The Ultimate Cut' Your chance to win a live make over at the Vitality Spa hair show. Come and watch our international hair stylist revamp one of our lucky guest and educate you in the latest hair trends, styles and teach you how you can have that salon look every day. Free collagen eye treatment and sunglow application for all that attend. Spaces are limited, contact the Spa to enter the raffle and reserve your seat, dial 4600.



## ACTIVITIES AND ENTERTAINMENT HIGHLIGHTS

### TODAY'S SHOWS



### Comedy LIVE starring Jim Colliton (English) & Joan Dominguez (Spanish)

It's a whole lot of laughs at Comedy LIVE, one of our signature after-dark venues. Reservations are required for the 7:30 pm & 9:30 pm (English shows) & 11:30 pm (Spanish show, minimum 25 guests required). Seating for the show is on a first-come, first-serve basis and is for adults only. Comedy LIVE, Deck 4.



### Headliner Showtime starring The Magnets

The Magnets are a cappella stars, making great music simply with their mouths. Combining glorious harmonies, virtuosi beatboxing and a very British charm they have become a must see act on the international music scene, with a hard-won reputation as festival favourites from Edinburgh to Adelaide. The Magnets have paid their dues from early days as a student group and street performers in Covent Garden, through a major record deal with EMI and over a decade of international touring. Now enjoying the resurgence in the popularity of vocal harmony singing, seen everywhere from Glee to The Choir, the band are often seen and heard on television and radio at home and abroad. They are frequent contributors on BBC Radio 2, while other recent major appearances include Comic Relief, BBC Breakfast and the viral Tmobile 'Welcome Back' advert. Building on their success as a festival act, The Magnets regularly tour as a headlining act across Europe and beyond, including shows at major London venues such as O2 Empire and Roundhouse. They have also supported artists such as Blondie and Tom Jones, and have performed at private events for supermodels, heads of state and royalty.

9:00 pm & 11:00 pm, Amber Theater, Decks 4 & 5.

### DAYTIME ACTIVITIES

#### Family Charades Gameshow

Is it a movie or is it a television program? Try your best to act out the title of whatever it is using only your hands and body actions, and without saying a word! Get ready to laugh and have a good time with your Cruise Director's staff at this great new daytime activity.

1:00 pm, Schooner Bar, Deck 6.

### EVENING ACTIVITIES

#### 50's & 60's Music Trivia

Who doesn't remember Elvis? Or Billie Holiday? Or Dean Martin and the rest of the Rat Pack? But can you name their songs? Test your knowledge and see how you measure up against the other guests.

8:15 pm, Schooner Bar, Deck 6.

#### Magic Show with your Cruise Director's Staff Charly D'Carlo

A 100% interactive and family oriented show where you are going to be the assistants rather than spectators. Because magic is real!

10:00 pm, On Air, Deck 5.

#### Karaoke On Air Club

Perform in front of a live audience. Promises fun, laughter and your 15-minutes of onboard fame.

Adult Karaoke (18+) at 10:45 pm - 12:30 am, On Air, Deck 5.

#### Battle of the Sexes Game Show

Men or women - want to know who's better? Join your Cruise Director's staff and find out. Warning: It could get riotously funny.

11:00 pm, Dazzles, Decks 8 & 9.



# EVENING ACTIVITIES

Refer to your daily planner for activities that begin before 6:00 pm.

|                    |   |
|--------------------|---|
| 6:00 pm            | Complimentary Seminar: Non-Surgical Facelift, Day Spa ..... Deck 6  |
| 6:00 pm            | Stretch & Relax, Fitness Center ..... Deck 6  |
| 6:00 pm            | Adult Golf Competition, (weather permitting) Allure Dunes ..... Deck 15   |
| 6:00 pm - 7:30 pm  | GLOW Accessories on sale (\$) for tomorrow night's WHITE Party, outside On Air ..... Deck 5   |
| 6:00 pm - 8:00 pm  | Volleyball Open Play, (weather permitting) Sports Court ..... Deck 15   |
| 6:00 pm - 6:00 am  | Itinerary Map & View from the Royal Promenade . . . Channel 17  |
| 7:00 pm - 8:00 pm  | Complimentary Facial Rejuvenation Consultations Vitality Spa ..... Deck 6   |
| 7:00 pm - 10:00 pm | Guess the Weight of the Nano Lopez Sculpture, Royal Promenade ..... Deck 5  |
| <b>7:30 pm</b>     | <b>All Aboard</b>   |
| 7:30 pm            | ☞ Comedy Show (English) (18+), Comedy LIVE ..... Deck 4   |
| 7:30 pm - 9:00 pm  | Margarita Madness in Boleros (\$) Royal Promenade ..... Deck 5  |
| 7:45 pm            | ☞ DreamWorks Move It! Move It! Parade Royal Promenade ..... Deck 5  |
| 8:00 pm - 8:30 pm  | Complimentary Gaming Lessons Casino Royale ..... Deck 4   |
| 8:00 pm - 9:07 pm  | ☞ Outdoor Movie: <i>Wreck It Ralph (English)</i> AquaTheater ..... Deck 6   |
| 8:00 pm - 10:00 pm | Collect your Complimentary Art Pack Art Gallery ..... Deck 4  |
| 8:00 pm - late     | Cigars Under the Stars, (weather permitting) Pool Bar ..... Deck 15   |
| 8:15 pm            | 🎵 50's & 60's Music Trivia, Schooner Bar ..... Deck 6   |
| 8:15 pm            | Designer Watch Sale up to 35% Off, Royal Promenade ..... Deck 5   |
| 8:30 pm            | Omega and Breitling sale, Regalia ..... Deck 5  |
| 9:00 pm            | ☞ Headliner Showtime starring The Magnets Amber Theater ..... Decks 4 & 5   |
| 9:00 pm            | Michael Kors Bags - Up to 25% Off Sale Royal Promenade ..... Deck 5   |
| 9:00 pm - 9:20 pm  | ☞ DreamWorks Professional Photo Opportunity with Shrek. On Air ..... Deck 5   |
| 9:00 pm - 10:00 pm | 🎵 Ballroom dancing ( <i>pre-recorded playlist</i> ) Blaze ..... Deck 4  |
| 9:00 pm - 10:50 pm | Ice Skating ( <i>No Reservations required, sessions run every 30 minutes, 50 guests max, long pants and socks are required.</i> ) Studio B ..... Deck 4 |
| 9:00 pm - 11:00 pm | Double Points on Slots, Casino Royale ..... Deck 4  |
| 9:00 pm - 11:00 pm | The Great Casino Giveaway - Celebrating Casino Firsts Casino Royale ..... Deck 4  |
| 9:15 pm - 11:00 pm | 🎵 Cool Jazz & Standards-with the Full Swing Quartet Jazz on 4 ..... Deck 4  |
| 9:20 pm - 9:40 pm  | ☞ DreamWorks Professional Photo Opportunity with Princess Fiona, On Air ..... Deck 5  |
| 9:30 pm            | ☞ Comedy Show (English) (18+), Comedy LIVE ..... Deck 4   |
| 9:30 pm - 10:45 pm | 🎵 50's & 60's Rock 'n' Roll Dancing with Center Piece Dazzles ..... Decks 8 & 9   |
| 9:30 pm - late     | 🎵 Pub Entertainment with Robbie McNay Bow & Stern Pub ..... Deck 5  |
| 9:30 pm - late     | 🎵 Latin Fiesta with Candela Bolero's ..... Deck 5   |

## EVENING ACTIVITIES continued.....

|                     |   |
|---------------------|---|
| 9:40 pm - 10:00 pm  | ☞ DreamWorks Professional Photo Opportunity with Puss in Boots, On Air ..... Deck 5                 |
| 9:45 pm             | ☞ Selection of Fountain Shows, AquaTheater ..... Deck 6   |
| 9:45 pm - late      | 🎵 Vocal & Piano Bar Entertainment with Derek Conlon, Schooner Bar ..... Deck 6                      |
| 10:00 pm            | ☞ DreamWorks Family Meet & Greet with Po from Kung Fu Panda, Royal Promenade (Red Car) . . . Deck 5 |
| 10:00 pm - 10:15 pm | Singles & Solo Travelers Get-Together Rising Tide Bar ..... Decks 5                                 |
| 10:00 pm - 10:45 pm | ☞ Magic Show with your Cruise Director's Staff... Charly D'Carlo, On Air ..... Deck 5               |
| 10:00 pm - 11:00 pm | 🎵 80's & 90's Hour with DJ KYD WICKED, Blaze ..... Deck 4   |
| 10:00 pm - 12:05 am | ☞ Outdoor Movie: <i>Jurassic World (English)</i> AquaTheater ..... Deck 6                           |
| 10:30 pm            | ☞ DreamWorks Family Meet & Greet with King Julien from Madagascar, On Air ..... Deck 5              |
| 10:30 pm            | Sit & Go Texas Hold'em Tournament (\$) Casino Royale ..... Deck 4                                   |
| 10:45 pm - 12:30 am | 🎵 Adult Karaoke (18+), On Air ..... Deck 5  |
| 11:00 pm            | ☞ Headliner Showtime starring The Magnets, Amber Theater ..... Decks 4 & 5                          |
| 11:00 pm            | Swiss Watch Trivia Raffle, Regalia ..... Deck 5   |
| 11:00 pm            | ☞ Battle Of The Sexes Gameshow, Dazzles ..... Decks 8 & 9   |
| 11:00 pm - late     | 🎵 Dance the night away with DJ KYD WICKED (18+) Blaze ..... Deck 4                                  |
| 11:00 pm - late     | 🎵 Time Machine Dance Party with Center Piece Dazzles ..... Decks 8 & 9                              |
| 11:15 pm - late     | 🎵 Birdland Big Band Jazz with the Allure of the Seas Orchestra, Jazz on 4 ..... Deck 4              |
| 11:30 pm            | ☞ Comedy Show (Spanish) (18+, Minimum 25 guests required), Comedy LIVE ..... Deck 4                 |
| 11:45 pm            | \$800,000+ Live Lotto Drawing (\$) Casino Royale ..... Deck 4                                       |

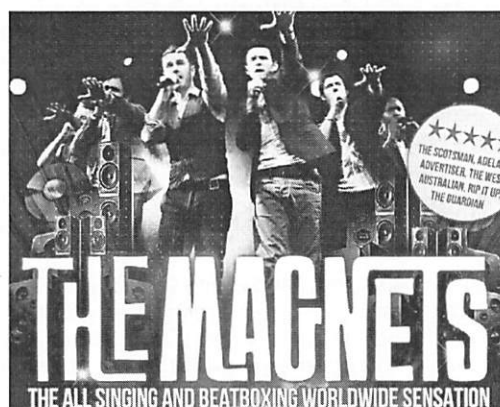
☞ Assistive listening system available - obtain receivers at Guest Services, Deck 5.

## YOUR CRUISE DIRECTOR, BOBBY

proudly presents

### HEADLINER SHOWTIME

Starring Beatles Celebration



9:00 pm & 11:00 pm, Amber Theater, Decks 4, 5



# OPEN HOURS



|                                 |   |  |
|---------------------------------|---|--|
| Art Gallery                     | 6:00 pm – 10:00 pm  | Deck 4   |
| Carousel                        | 8:00 pm – 11:00 pm  | Deck 6   |
| Casino Royale                   | Tables: 8:30 pm – late<br>Slots: 8:30 pm – late                           | Deck 4   |
| Foreign Language Assistance     | 6:30 pm – 8:00 pm (Guest Services)  | Deck 5   |
| Internet Assistance             | 5:30 pm – 10:30 pm  | Deck 5   |
| Loyalty Ambassador Desk         | 3:00 pm – 8:00 pm   | Deck 6   |
| Medical Facility (Dial 51)      | 8:00 am – 11:00 am / 4:00 pm – 7:00 pm                                    | Deck 2 aft<br>(For further medical inquiries, dial 1200) |
| NextCruise Office               | 4:00 pm – 8:00 pm (Appointments advisable)                                | Deck 6   |
| Pets at Sea                     | 8:00 pm – 10:00 pm  | Deck 6   |
| Photo Gallery                   | 8:30 pm – 11:00 pm  | Deck 6   |
| Picture This Studio             | 6:30 pm – 10:00 pm  | Deck 8   |
| Rising Tide Bar                 | 1:00 pm – 1:00 am (Rising Tide will be closed from 7:30 pm until 8:00 pm) | Decks 5, 8   |
| Shops Onboard                   | 8:15 pm – midnight  | Decks 5, 6, 8  |
| Shore Excursions Desk           | 11:00 am – 11:00 pm<br>(will close during Guest Assembly Drill)           | Deck 5   |
| Show Reservation                | 5:30 pm – 6:30 pm (Champagne Bar)   | Deck 5   |
| Vitality at Sea Spa (Dial 4600) | 8:00 am – 10:00 pm  | Deck 6   |
| Vitality at Sea Fitness Center  | 6:00 am – 1:00 am   | Deck 6   |

The Following Services and Venues are Open 24 Hours:  
**Emergency Only** (Dial 911) / **Guest Services** (Dial 0), Deck 5 / **Jogging Track** Deck 5  
**Library** Deck 11 / **Operator** (Dial 0) / **Photo Kiosk** Deck 6 / **RCTV** (Show, Spa and Excursion reservations available) / **royal caribbean online** Decks 7, 9, 14 / **Selected Swimming Pools & Hot Tubs** Deck 15 / **Seven Hearts Card & Game Room** Deck 14 / **Solarium Hot Tubs, Pools & Area** (16 years & older only), Decks 15, 16 / **Table Tennis** Deck 15

For rules and restrictions and sign up requirements, please see the staff at the appropriate venue.

## SPORTS ACTIVITIES & OPEN HOURS

|                        |                             |         |
|------------------------|-----------------------------|---------|
| Allure Dunes Golf      | 8:00 am – 11:00 pm          | Deck 15 |
| FlowRider**            |                             | Deck 16 |
| Stand-up Surfing       | 5:45 pm – 8:00 pm; portside |         |
| Rock Climbing Walls*** |                             | Deck 7  |
| Open Climbing          | 5:30 pm – 8:00 pm           |         |
| Advanced Climbing      | 8:00 pm                     |         |
| Sports Court           | 8:00 am – 11:00 pm          | Deck 15 |
| Sports Desk*           | 5:30 pm – 8:00 pm           | Deck 16 |
| Zip Line****           | 5:30 pm – 7:30 pm           | Deck 16 |

\*\*Please bring socks, t-shirt and shorts/pants and clothing must be dry. Minimum age is 6 years.  
 Sign ups will close 15-30 minutes before closing time.

## NOTICES

**Smoking Policy** – All indoor public spaces on the Allure of the Seas are smoke free with the exception of the Casino which has designated smoking and non-smoking areas. Additionally, smoking will not be permitted in the staterooms or on stateroom balconies including all Suites & Lofts. Designated outdoor smoking areas are located on the port side of Deck 15 and 16. Electronic cigarettes or e-cigarettes are only permitted within designated smoking areas.

**Pool Towel Policy** – For your convenience, towels for use at the pools onboard or beaches ashore are available from the Towel Station on Deck 15. Towels can be exchanged at the Towel Station during the cruise. We kindly request our guests return their used towels to the towel station after every use to ensure a proper towel inventory.

**All Pool Deck Chairs Are First Come, First Served** – We hope you have a great time at the pool today. Please keep in mind that pool deck chairs are for the enjoyment of all of our guests. Pool deck chairs are only available on a first come, first served basis and may not be reserved. Thank you for your cooperation.

## DOUBLE YOUR POINTS DOUBLE YOUR PRIZES!

From 9:00 pm to 11:00 pm you can earn double points when you play the slot machines. Simply insert your SeaPass® card in the card reader. It's that easy to double your points – and win some amazing prizes! Have fun and good luck!



# EVENING PLANNER

Allure of the Seas®

## CIVITAVECCHIA, ITALY

Thursday, October 22, 2015

All Aboard: 7:30 pm

### DINING SCHEDULE DINNER & SNACKS

**Check the Dining Availability Screens located throughout the ship and on your stateroom TV. Dial 7000 for reservations.**

**DINNER** – Please note that swimsuits, robes, bare feet, tank tops, baseball caps & pool wear are not allowed in the main dining restaurants or specialty restaurants.

| SHIITAKE DINNER   | CASUAL ATTIRE   | DECK |
|-------------------|---|------|
| 5:30 pm – 9:30 pm | My Time Dining, American Icon Restaurant . . . 3<br><i>Please wait to be seated by our Dining Room Staff.<br/>(For reservations dial 4000 between 11:30 am – 3:30 pm)</i> |      |
| 6:00 pm           | Main Seating, Silk Restaurant . . . . . 5<br><i>Please allow at least one and a half to two hours for dinner service.</i>   |      |
| 6:15 pm           | Main Seating, The Grande Restaurant . . . . . 4<br><i>Please allow at least one and a half to two hours for dinner service.</i>   |      |
| 6:15 pm – 9:30 pm | Casual Dinner, Windjammer Marketplace . 16<br><i>Casual dinner in the Windjammer Marketplace is buffet style.</i>   |      |
| 8:30 pm           | Second Seating, Silk Restaurant . . . . . 5<br><i>Please allow at least one and a half to two hours for dinner service.</i>   |      |
| 8:45 pm           | Second Seating, The Grande Restaurant . . . . 4<br><i>Please allow at least one and a half to two hours for dinner service.</i>   |      |

### SPECIALTY DINING \$

|                    |  |
|--------------------|--|
| 5:00 pm – 11:00 pm | Sabor . . . . . 6<br><i>A fun and vibrant Mexican restaurant &amp; bar with great food &amp; drinks.<br/>A la carte pricing.</i>   |
| 6:00 pm – midnight | Vintages Wine & Tapas Bar . . . . . 8<br><i>A la carte pricing. (Just walk right in, no reservation needed during open hours)</i>  |
| 6:30 pm – 10:30 pm | Chops Grille . . . . . 8<br><i>The best steak on the high seas. \$39 dining fee per person applies.</i>  |
| 6:30 pm – 10:30 pm | Giovanni's Table . . . . . 8<br><i>Family style Italian dining. \$25 dining fee per person applies.</i>  |
| 6:30 pm – 10:30 pm | Izumi . . . . . 4<br><i>Hibachi and sushi, a la carte pricing.</i>   |
| 6:30 pm – 10:30 pm | 150 Central Park . . . . . 8<br><i>An intimate dining experience. \$40 dining fee per person applies.</i>  |
| 6:30 pm – 10:30 pm | Samba Grill . . . . . 15<br><i>A Brazilian Churrascaria Steakhouse. \$30 dining fee per person applies.</i>  |
| 8:30 pm            | Chef's Table . . . . . 11<br><i>Exclusive multi-course dinner and wine pairing hosted by one of our many talented Allure of the Seas Chefs and Sommelier<br/>\$85 dining fee per person applies.</i> |

Please note: A cancellation fee and dress code policies apply to our specialty restaurants. For details or to make your reservation please visit our specialty restaurants or call extension 7000 between 9:00 am and 3:00 pm. Kindly allow two to three hours for your dining experience. Outdoor seating if weather permitting.

Public Health Advisory: Consuming raw under cooked meat, seafood, shell fish, eggs, milk or poultry may increase your risk of food borne illness, especially if you have certain medical conditions.

### SNACKS

|                    |  |
|--------------------|--|
| 24 hours           | Room Service – Please note a \$3.95 service charge will be applied for Room Service orders between midnight and 5:00 am. |
| 24 hours           | Café Promenade . . . . . Royal Promenade 5   |
| 6:00 pm – 9:00 pm  | Vitality Spa Café (\$) . . . . . Vitality Spa 6  |
| 6:00 pm – 11:00 pm | Cups and Scoops (\$) . . . . . Boardwalk 6   |
| 6:00 pm – 11:00 pm | Starbucks® Coffee (\$) . . . . . Royal Promenade 5   |
| 6:00 pm – 11:30 pm | Johnny Rockets (\$) . . . . . Boardwalk 6  |
| 6:00 pm – 3:00 am  | Sorrento's . . . . . Royal Promenade 5   |

\* For those wishing to experience breakfast on Saturday morning with the DreamWorks Family, please dial 4000 from 9:00 am – 4:00 pm (\$).



## DRINK OF THE DAY - ITALIAN SUNRISE

A sweet and tart delight with Smirnoff vodka, triple sec, orange juice, Sprite and a dash of playful Monin Pomegranate...and the glass is yours to keep! \$10





# OPEN HOURS



# DAILY PLANNER

Allure of the Seas®

|  |   |                       |
|--|---|-----------------------|
| <b>Baby Splash Zone*</b>   | 8:00 am – 6:00 pm (Starboard, inside the H2O Zone)                                  | <b>Deck 15</b>        |
| <b>Carousel</b>  | 8:00 pm – 11:00 pm  | <b>Deck 6</b>         |
| <b>Casino Royale</b>   | Tables: 8:30 pm – late  |                       |
|  | Slots: 8:30 pm – late   | <b>Deck 4</b>         |
| <b>Foreign Language Assistance</b>   | 8:00 am – 10:00 am / 6:30 pm – 8:00 pm  |                       |
|  | (Guest Services)  | <b>Deck 5</b>         |
| <b>H2O Zone****</b>  | 8:00 am – 8:00 pm (Please note that height restrictions apply to our Current Pool*) | <b>Deck 15</b>        |
|  | 8:30 am – 4:00 pm / 5:30 pm – 10:30 pm  | <b>Deck 5</b>         |
| <b>Internet Assistance</b>   | 3:00 pm – 8:00 pm   | <b>Deck 6</b>         |
| <b>Loyalty Ambassador Desk</b>   | 8:00 am – 11:00 am & 4:00 pm – 7:00 pm  | <b>Deck 2 aft</b>     |
| <b>Medical Facility (Dial 51)</b>  | (For further medical inquiries, dial 1200)  |                       |
|  | 8:00 am – 10:00 am / 4:00 pm – 8:00 pm  |                       |
| <b>NextCruise Office</b>   | (Appointments advisable)  | <b>Deck 6</b>         |
|  | 7:00 pm – 10:00 pm  | <b>Deck 6</b>         |
| <b>Pets at Sea</b>   | 8:30 pm – 11:00 pm  | <b>Deck 6</b>         |
| <b>Photo Gallery</b>   | 6:30 pm – 10:30 pm  | <b>Deck 8</b>         |
| <b>Picture This</b>  |   |                       |
| <b>Rising Tide Bar</b>   | 1:00 pm – 1:00 am (Rising Tide will be closed from 7:30 pm until 8:00 pm)           | <b>Decks 5, 8</b>     |
|  | 8:15 pm – midnight  | <b>Decks 5, 6, 8</b>  |
| <b>Shops Onboard</b>   | 7:00 am – 9:00 am / 11:00 am – 11:00 pm   |                       |
| <b>Shore Excursions Desk</b>   | (will close during Guest Assembly Drill)  | <b>Deck 5</b>         |
|  | 10:30 am – 1:00 pm / 2:00 pm – 3:30 pm  |                       |
| <b>Show Reservations</b>   | (Hospitality Desk)  | <b>Deck 3 forward</b> |
|  | 5:30 pm – 6:30 pm, (Champagne Bar)  | <b>Deck 5</b>         |
|  | (Contact Guest Services by dialing 0)   | <b>Deck 5</b>         |
| <b>Tuxedo Rentals</b>  | 8:00 am – 10:00 pm  | <b>Deck 6</b>         |
| <b>Vitality at Sea Spa (Dial 4600)</b>   | 6:00 am – 4:00 pm / 5:30 pm – 1:00 am   | <b>Deck 6</b>         |
| <b>Vitality at Sea Fitness Center</b>  |   |                       |
| <b>The Following Services and Venues are Open 24 Hours:</b>  |   |                       |
| <b>Emergency Only (Dial 911) / Guest Services (Dial 0), Deck 5 / Jogging Track, Deck 5 / Library, Deck 11 / Operator (Dial 0) / Photo Kiosk, Deck 6 / RCTV (Show, Spa and Excursion Reservations available) / royal caribbean online™, Decks 7, 9, 14 / Selected Swimming Pools &amp; Hot Tubs, Deck 15 / Solarium Hot Tubs, Pools &amp; Area (16 years &amp; older only), Decks 15, 16 / Table Tennis, Deck 15.</b> |   |                       |

## SPORTS ACTIVITIES & OPEN HOURS

|                                  |   |                |
|----------------------------------|---|----------------|
| <b>Allure Dunes Golf</b>         | 8:00 am – 11:00 pm                                | <b>Deck 15</b> |
| <b>FlowRider®**</b>              |   | <b>Deck 16</b> |
| <b>Advanced Stand-up Surfing</b> | 9:00 am – 10:00 am; portside                      |                |
| <b>Stand-up Surfing</b>          | 10:00 am – 11:00 am & 5:45 pm – 8:00 pm; portside |                |
| <b>Boogie Boarding</b>           | 11:00 am – noon; portside                         |                |
| <b>Rock Climbing Walls***</b>    |   | <b>Deck 7</b>  |
| <b>Open Climbing</b>             | 5:30 pm – 8:00 pm                                 |                |
| <b>Advanced Climbing</b>         | 8:00 pm   |                |
| <b>Sports Court</b>              | 8:00 am – 11:00 pm                                | <b>Deck 15</b> |
| <b>Sports Desk*</b>              | 9:00 am – noon & 5:30 pm – 8:00 pm                | <b>Deck 16</b> |
| <b>Zip Line****</b>              | 5:30 pm – 7:30 pm                                 | <b>Deck 16</b> |

\*Please bring your SeaPass card to all activities. Parents must be present to sign a waiver for children under the age of 18 and must stay to supervise children under the age of 13 years.

\*\*Please remove all jewelry items. Ladies are advised to wear a T-Shirt. Minimum height requirement; Boogie Boarding is 52", Stand Up Surfing is 58". The line will be closed 30 minutes - 1 hour before closing time.

\*\*\*Please bring socks, t-shirt and shorts/pants and clothing must be dry. Minimum age is 6 years old. Sign ups will close 15-30 minutes before closing time.

\*\*\*\*Please bring only your SeaPass Cards, upon arrival remove all loose articles: including cameras, watches, jewelry, purses, wallets, and glasses and ensure pockets are completely empty. Please tie back long hair and wear tennis shoes/sneakers or bring socks. Please bring a t-shirt and shorts/pants; clothing must be dry. Weight requirements: minimum of 75 lbs. and maximum of 275 lbs. Height requirement; minimum 52" tall. Sign ups will close 15-30 minutes before closing time.

\*\*\*\*\*Guests must meet the height requirements prior to entering the current pool. Guest who do not meet the height requirements may only enter the pool under the supervision of an adult or guardian.

## NOTICES

**VALUE-ADDED TAX** – Local laws require us to charge Spanish value-added tax, also known as VAT, of 21% on most products and services purchased onboard, including communications services (internet packages and ship-to-shore phone calls made from your stateroom telephone.) A lower VAT rate applies to certain purchases, such as of beverages and food bought at our onboard bars and specialty restaurants, which are taxed at a rate of 10%. If you live outside the European Union, you may be eligible for a partial refund of the VAT paid on merchandise only. Please refer to the letter in your stateroom for more details.

**Baby Splash Zone** – The Baby Splash Zone on Deck 15 is for use by children in swim diapers who are not completely toilet trained. Children must wear a clean swim diaper before using this facility. Frequent swim diaper changes are recommended. Swim Diapers are available from the Royal Shops, Deck 5.

## ESCAPE TO A LAND WHERE MOUNTAINS TOUCH THE SKY

Escape to an untamed wilderness of breathtaking scenery and magnificent wildlife. Our Alaska cruises take you on a surreal journey to a world where eagles soar above towering mountains and hump-backed whales play off rugged coastlines. With fascinating ports steeped in pioneering history, astounding scenery and ancient native traditions. Ask the team at Next Cruise, Deck 6.

## Civitavecchia (Rome), Italy

Thursday, October 22, 2015

**GANGWAY OPEN:** 7:15 am

**ALL ABOARD:** 7:30 pm

## BREAKFAST, LUNCH SCHEDULE & AFTERNOON SNACKS

Please dial 7000 for Specialty Dining reservations

| BREAKFAST   | DECK |
|---|------|
| 6:00 am – 11:00 am Breakfast . . . Windjammer Marketplace   | 16   |
| 7:00 am – 9:00 am Express Breakfast Buffet and a la carte . . . . . American Icon   | 3    |
| 7:00 am – 10:00 am Wipeout Café Breakfast (Fried eggs & omelets cooked to order) . . . . . Sports Deck                                  | 15   |
| 7:00 am – 10:30 am Solarium Bistro . . . . . Solarium   | 15   |
| 7:00 am – 10:30 am Park Café . . . . . Central Park   | 8    |
| 8:00 am – 10:00 am Johnny Rockets . . . . . Boardwalk   | 6    |
| LUNCH   |      |
| 11:00 am – 3:30 pm Windjammer Marketplace . . . . .   | 16   |
| 11:30 am – 6:00 pm Park Café . . . . . Central Park   | 8    |
| Noon – 2:00 pm Giovanni's Table (\$) . . . . Central Park   | 8    |
| Noon – 3:30 pm Solarium Bistro . . . . . Solarium   | 15   |
| Noon – 6:00 pm Vintages Tapas (\$) . . . . Central Park   | 8    |
| 1:00 pm – 6:00 pm Johnny Rockets (\$) . . . . Boardwalk   | 6    |
| 3:00 pm – 6:00 pm Wipeout Café . . . . . Sports Deck  | 15   |
| SNACKS  |      |
| 24 hours Room Service – Please note a \$3.95 service charge will be applied for Room Service orders between midnight and . . . 5:00 am. |      |
| 24 hours Café Promenade . . Royal Promenade   | 5    |
| 7:00 am – 9:00 pm Vitality Spa Café (\$) . . . Vitality Spa   | 6    |
| 7:00 am – 11:00 pm Starbucks® Coffee (\$) . . . . . Royal Promenade   | 5    |
| 7:00 am – 11:00 am Boardwalk Donuts . . . . . Boardwalk   | 6    |
| 11:30 am – 6:00 pm Frozen Yogurt . . . . . Pool Deck  | 15   |
| 11:30 am – 11:00 pm Cups and Scoops (\$) . . . Boardwalk  | 6    |
| 11:30 am – 3:00 am Sorrento's . . . . . Royal Promenade   | 5    |
| 1:00 pm – 8:00 pm Boardwalk Dog House . . . Boardwalk   | 6    |

Public Health Advisory: Consuming raw under cooked meat, seafood, shell fish, eggs, milk or poultry may increase your risk of food borne illness, especially if you have certain medical conditions.

## BAR HOURS

For early drinks Café Promenade is open at 7:00 am and the Pool bar opens at 9:00 am. For late night drinks the Casino Bar, Blaze, Boleros, Schooner Bar and the Bow and Stern remain open later than other bars. (Guests must be 18 years of older to purchase alcoholic beverages and photo id may be required)

## DRINK OF THE DAY - ITALIAN SUNRISE

A sweet and tart delight with Smirnoff vodka, triple sec, orange juice, Sprite and a dash of playful Monin Pomegranate...and the glass is yours to keep! \$10





### MORNING ACTIVITIES

|                    |  |
|--------------------|--|
| 24 hours           | Friends of Bill W. and other gatherings<br>Please refer to the Community Bulletin Board<br>in front of the Guest Services Desk.....Deck 5        |
| 24 hours           | Cards, Games, Daily Trivia, & Sudoku available<br>Seven Hearts Card Room ..... Deck 14   |
| Midnight – noon    | The Morning Show™ with your Cruise Director, Bobby & your<br>Activities Manager Hugo..... Channel 14   |
| 6:00 am – 6:00 pm  | Itinerary Map & View from the Bridge..... Channel 17   |
| <b>7:00 am</b>     | <b>Ship's Arrival in Civitavecchia</b>   |
| 7:00 am            | 3Klub Jogging for Intermediate Runners<br>Fitness Center.....Deck 6  |
| 7:00 am            | Early Morning Stretch, Fitness Center.....Deck 6   |
| <b>7:15 am</b>     | <b>Gangway Open (estimated)</b><br><b>(Please use gangway star button in the elevator)</b>   |
| 7:30 am            | Fab Abs, Fitness Center.....Deck 6   |
| 8:00 am            | Pathway to Yoga (\$), Fitness Center.....Deck 6  |
| 8:00 am – 10:00 pm | GLOW Hair Extensions for sale (\$) Day Spa..... Deck 6<br><i>(Also ask about the nail special including "glow in the<br/>dark" nail polish.)</i> |
| 9:00 am            | Adult Water Aerobics, (weather permitting)<br>Sports Pool..... Deck 15   |
| 9:00 am            | Body Sculpt Boot Camp (\$), Fitness Center.....Deck 6  |
| 10:00 am           | Morning Trivia, Schooner Bar.....Deck 6  |
| 10:30 am – 1:00 pm | Show Reservations, Hospitality Desk.... Deck 3 forward   |
| 11:00 am           | Nintendo Wii® Sports Tournament, On Air..... Deck 5  |

### AFTERNOON ACTIVITIES

|                   |   |
|-------------------|---|
| Noon              | Adventure Ocean Movie Matinee (Kids & Families)<br>Adventure Ocean Theater.....Deck 14  |
| Noon              | Meet and Greet your Personal Trainers,<br>Fitness Center.....Deck 6   |
| Noon              | DreamWorks Family Meet & Greet<br>Royal Promenade (midship).....Deck 5  |
| Noon – 2:00 pm    | Casino Hospitality Desk, Casino Royale.....Deck 4   |
| 1:00 pm           | Family Charades Silent Acting Game Show,<br>Schooner Bar.....Deck 6   |
| 1:00 pm – 4:00 pm | Meet and greet our Medi-Spa Doctor, Vitality Spa...Deck 6   |
| 1:30 pm           | DreamWorks Family Meet & Greet<br>Royal Promenade (midship).....Deck 5  |
| 2:00 pm           | Afternoon Trivia, Schooner Bar.....Deck 6   |
| 2:00 pm           | Seminar: <i>Walking in Comfort and Relieving Back Pain</i> ,<br>Fitness Center.....Deck 6   |
| 2:00 pm – 3:30 pm | Show Reservations, Hospitality Desk.... Deck 3 Forward  |
| 3:00 pm           | "UNO" Card Game with your Cruise Director's Staff,<br>Schooner Bar.....Deck 6   |
| 3:00 pm           | Seminar: <i>Burn Fat Faster</i> , Fitness Center.....Deck 6   |
| 3:00 pm           | DreamWorks Family Meet & Greet<br>Royal Promenade (midship).....Deck 5  |
| 3:00 pm – 4:00 pm | 20% OFF Any Draft Beer, On Air.....Deck 5   |
| 3:30 pm – 4:30 pm | 30% OFF House & Call Cocktails, Pool Zone.... Decks 15 & 16   |
| 4:00 pm           | Line Dance Class (Meet by the Car)<br>Royal Promenade.....Deck 5  |
| 4:00 pm – 6:00 pm | Margarita Madness 30% Off, Boleros.....Deck 5   |
| 4:30 pm – 5:30 pm | Fitness Center Closed for Guest Assembly Drill.....Deck 6   |
| <b>5:00 pm</b>    | <b>Guest Assembly Drill</b> (only for guests who joined <i>Allure of the<br/>Seas today</i> ), Listen for Further Instructions.. Decks 4, 5 & 6 |

|                   |  |
|-------------------|--|
| 5:00 pm – 8:00 pm | Free Facial Rejuvenation Consultations with Dr. Mailene,<br>Vitality Spa.....Deck 6                    |
| 5:30 pm           | What's That Love Song Music Trivia, Schooner Bar...Deck 6  |
| 5:30 pm           | Free Hair Show 'The Ultimate Cut' (Dial 4600 to sign-up),<br>Vitality Day Spa.....Deck 6               |
| 5:30 pm           | TRX Suspension Training, Fitness Center.....Deck 6   |
| 5:30 pm – 6:30 pm | Show Reservations<br>Royal Promenade (By the Champagne Bar)....Deck 5                                  |
| 5:30 pm – 8:00 pm | Complimentary Consultations: <i>Pain Management with<br/>Acupuncture</i> , Vitality Day Spa.....Deck 6 |
| 5:45 pm – 6:00 pm | Singles & Solo Travelers Get-together<br>Rising Tide Bar.....Decks 5 & 8                               |
| 5:45 pm – 6:00 pm | 15% OFF on your Second Martini<br>Rising Tide Bar..... Decks 5 & 8                                     |

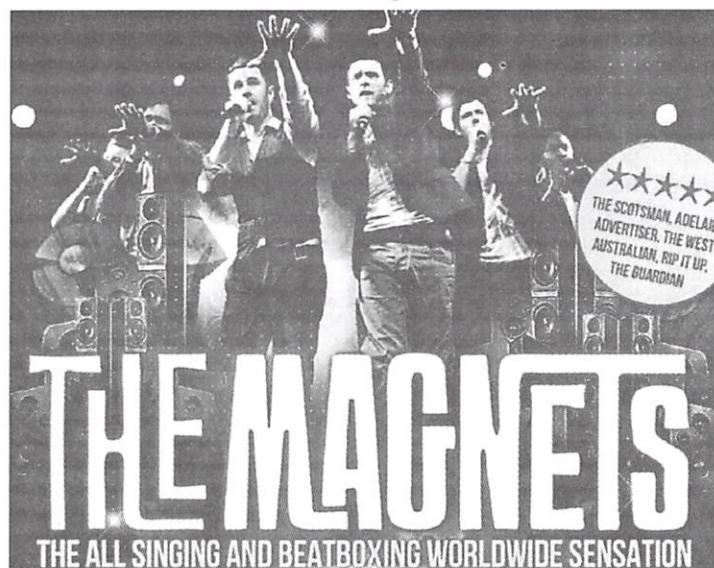
Assistive listening system available - obtain receivers at Guest Services, Deck 5.  
Refer to your evening planner for activities that begin at 6:00 pm or later.

## YOUR CRUISE DIRECTOR, BOBBY

proudly presents

## HEADLINER SHOWTIME

Starring



**9:00 pm & 11:00 pm, Amber Theater, Decks 4, 5**

### Important Contact Info in Civitavecchia (Rome), Italy

Aloschi & Bassani (A.S.C. Agenti Spedizionieri Civitavecchia

Via Darsena Romana, Ufficio n.5, Civitavecchia (RM)

Phone: + 39 0766 366548

Chiara Amici: + 39 3286 406950

Fabio Foschi: + 39 3207 404980

Email: Civitavecchia.Agent@Aloschibassani.com

### U.S. Embassy

Rome, Italy – Via Vittorio Veneto 119/A, 00187 Roma, Italia,

Phone: + 39 06 4674 1

### Local Law Enforcement

Polizia di Stato – Sezione Frontiera Scalo Marittimo, Largo della Pace, 00053

Civitavecchia,

Phone: + 39 0766 9601

99PRD39330

ICON  
LEGEND:



Vitality Activity



Music and Dancing



Shows



Reservation required



DreamWorks Activity



Fee for this event/activity



Crown & Anchor Society event